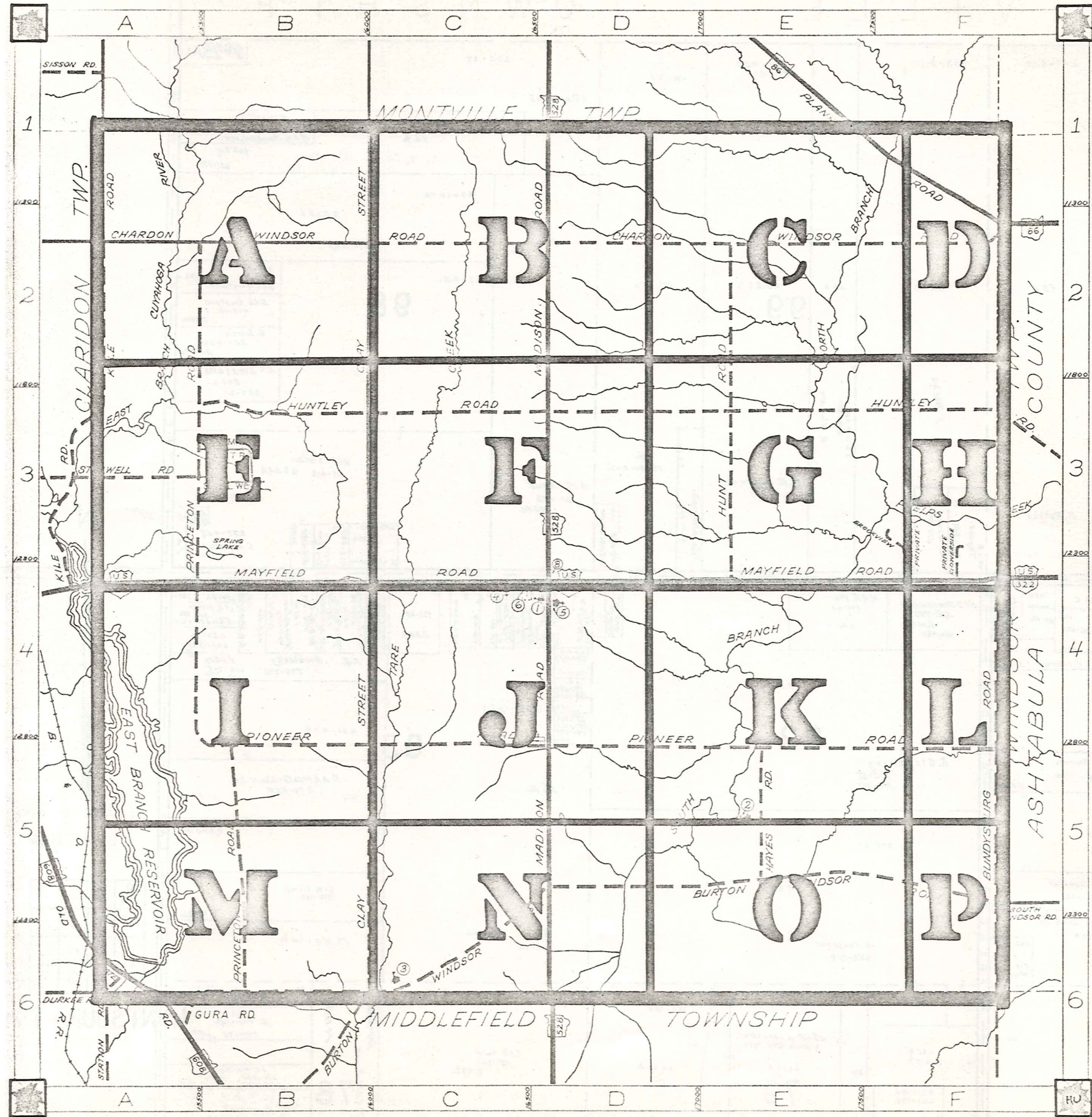


ROAD INDEX



A	J	STILLWELL RD.	A3
B	K	BROOKVIEW RD. F3 BUNDYSBURG RD. F4-F6 BURTON WINDSOR RD. C6-F5	AI-A4 TRAILWOOD RD. F4
C	L	CHARDON WINDSOR RD. A2-F2 CLAY STREET B1-B6	U
D	M	DURKEE RD. A6-B6	MADISON RD. D1-D6 MAYFIELD RD. A4-F4
E	N		WINDMILL POINT RD. B3
F	O	FLOWERSIDE RD. F4	OLD STATE RD. A6
G	P		PIONEER RD. B5-F5 PLANK RD. E1-F2 PRINCETON RD. B2-B6
H	Q	HAYES RD. E5 HUNTLEY RD. B3-F3 HUNT RD. E2-E4	
I	R		

- ① HUNTSBURG ELEM. SCHOOL
- ② AMISH SCHOOL
- ③ AMISH SCHOOL
- ④ HUNTSBURG BAPTIST CH.
- ⑤ HUNTSBURG CONGREGATIONAL CH.
- ⑥ HUNTSBURG CEMETERY
- ⑦ HUNTSBURG CEMETERY
- ⑧ UNITED STATES POST OFFICE
- ⑨
- ⑩

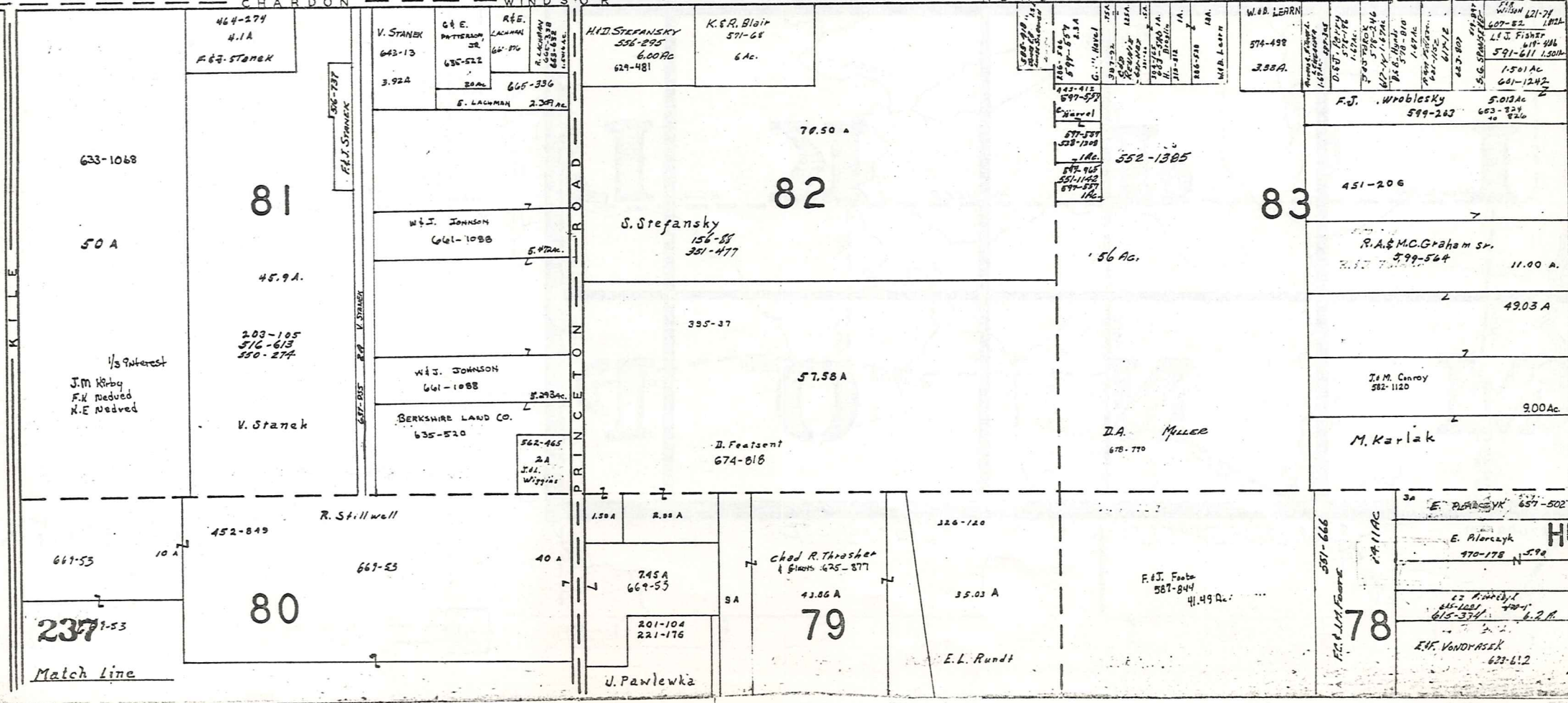
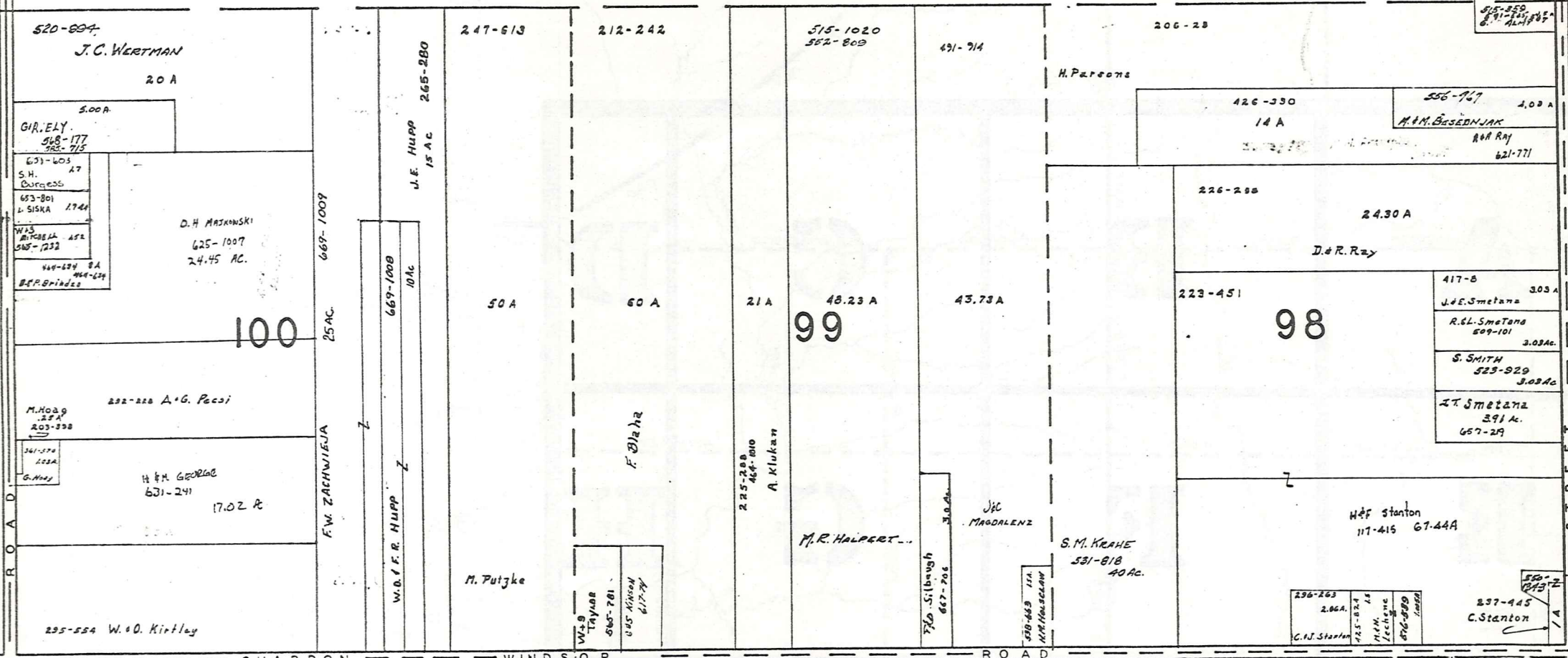
HUNTSBURG TOWNSHIP
 SCALE: 1" = 2000'
 ROBERT E. PHILLIPS,
 GEALGA COUNTY ENGINEER

--- UNPAVED ROADS
 --- PAVED ROADS
 --- TOWNSHIP LINE
 --- COUNTY LINE

MONTVILLE TOWNSHIP

TOWNSHIP

CLARIDON



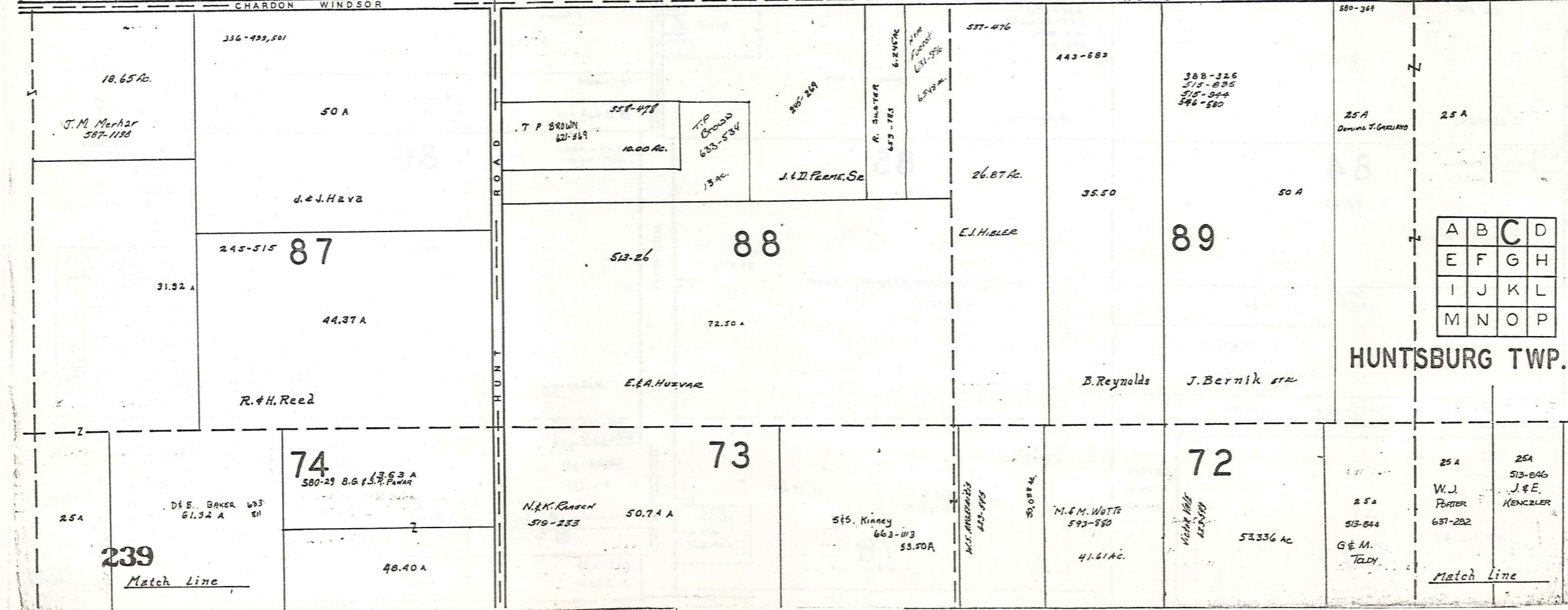
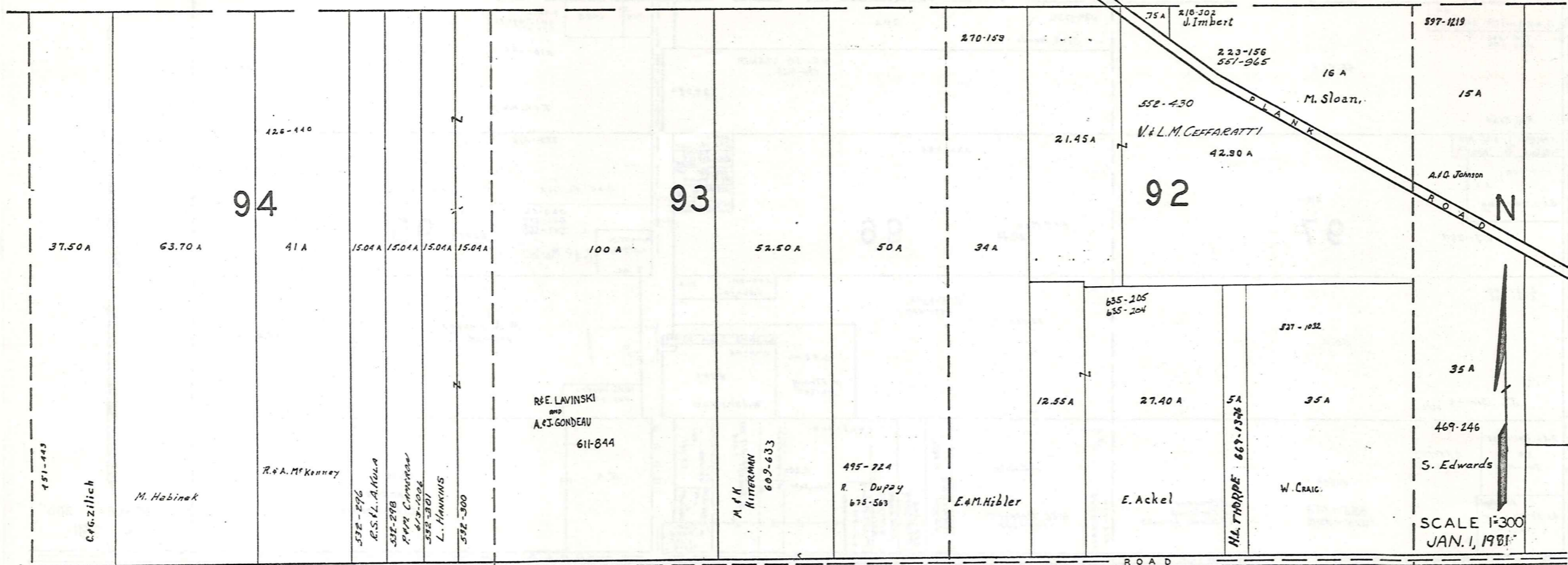
SCALE 1 300
 JAN. 1988

A	B	C	D
E	F	G	H
I	J	K	L
M	N	O	P

HUNTSBURG TWP.

Match Line

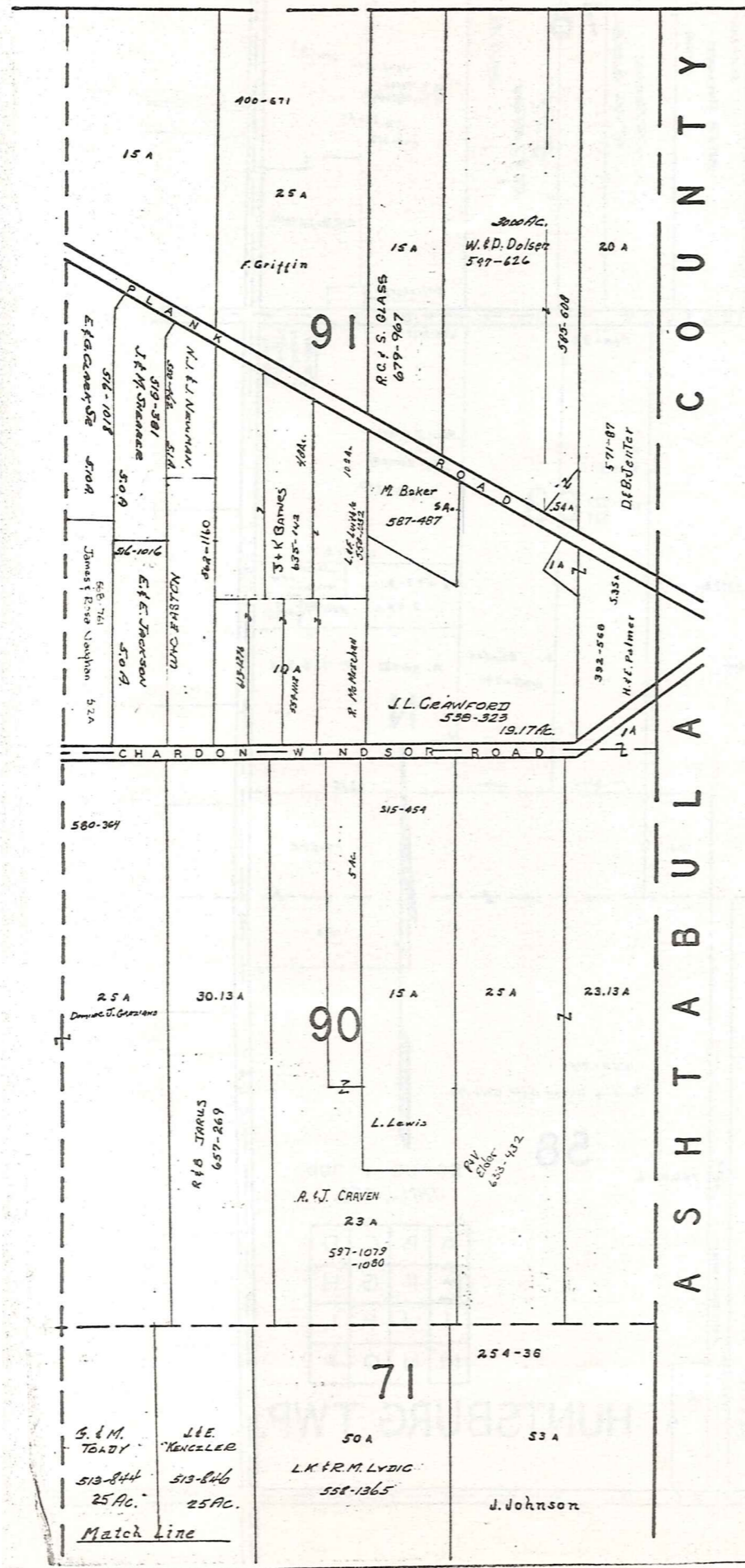
MONTVILLE TOWNSHIP



A	B	C	D
E	F	G	H
I	J	K	L
M	N	O	P

HUNTSBURG TWP.

MONTVILLE TWP.



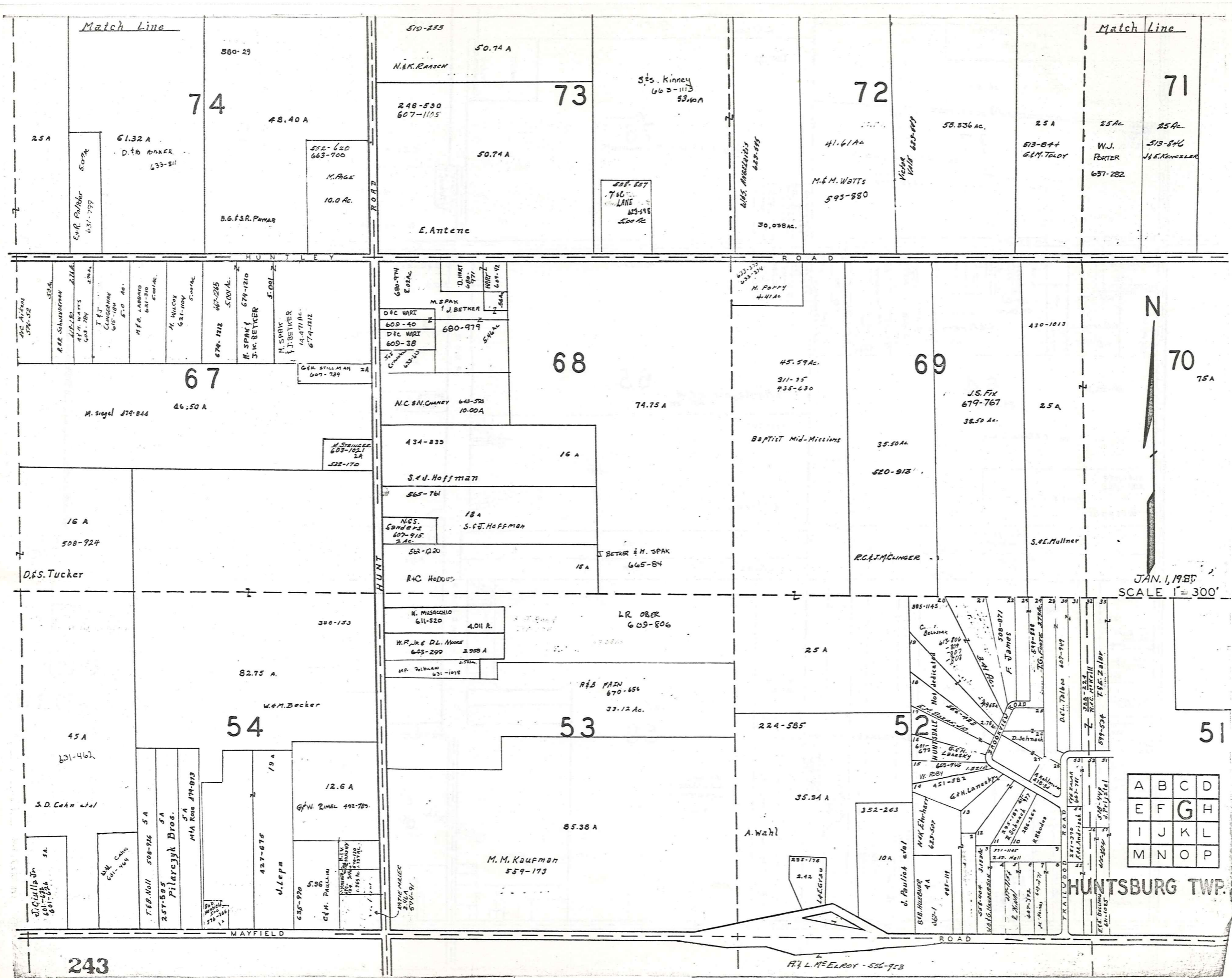
A S H T A B U L L A C O U N T Y



SCALE 1"=300'
JAN. 1, 1981

A	B	C	D
E	F	G	H
I	J	K	L
M	N	O	P

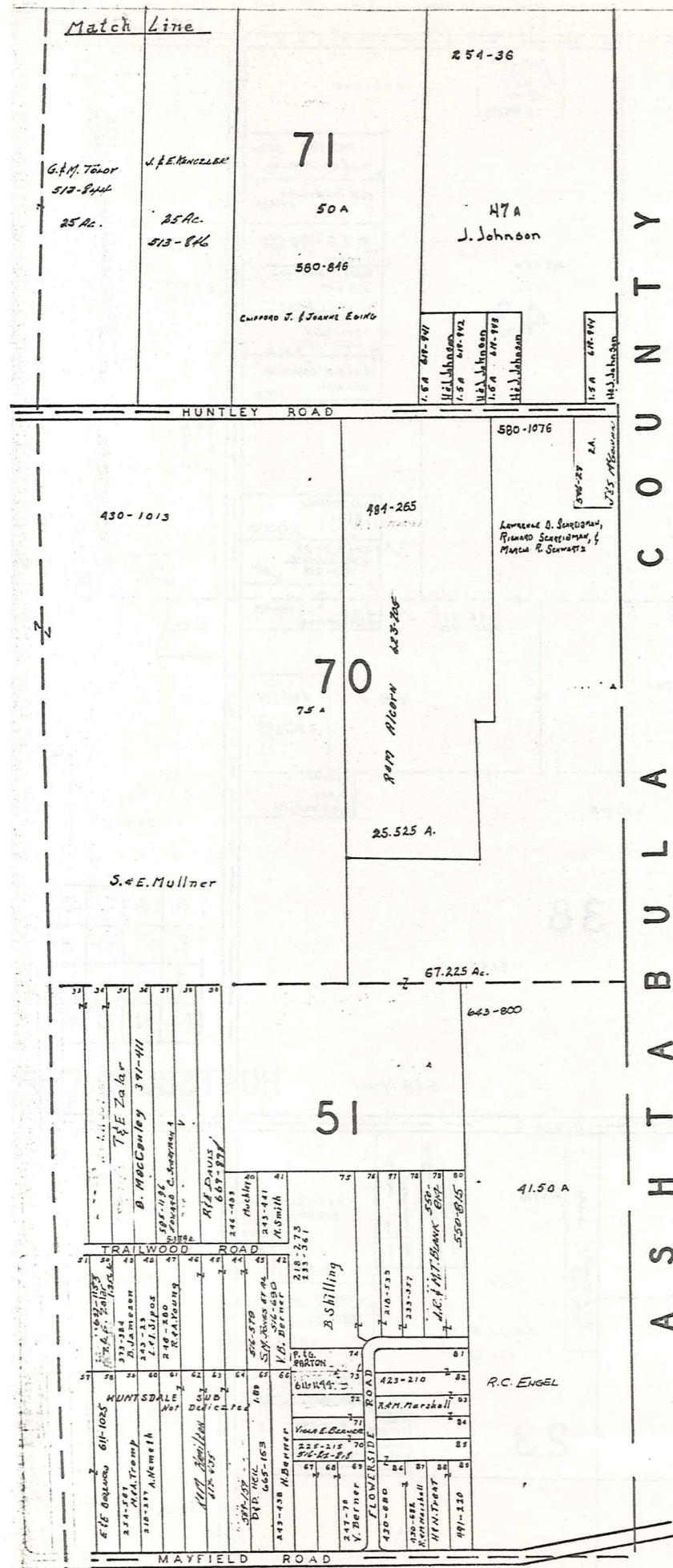
HUNTSBURG TWP.



JAN. 1, 1985
SCALE 1" = 300'

A	B	C	D
E	F	G	H
I	J	K	L
M	N	O	P

HUNTSBURG TWP.



ASH T A B U L A C O U N T Y



JAN. 1, 1921.
Scale 1" = 300'

A	B	C	D
E	F	G	H
I	J	K	L
M	N	O	P

HUNTSBURG TWP.

CLARIDON TOWNSHIP

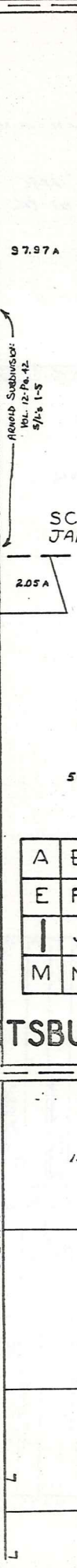
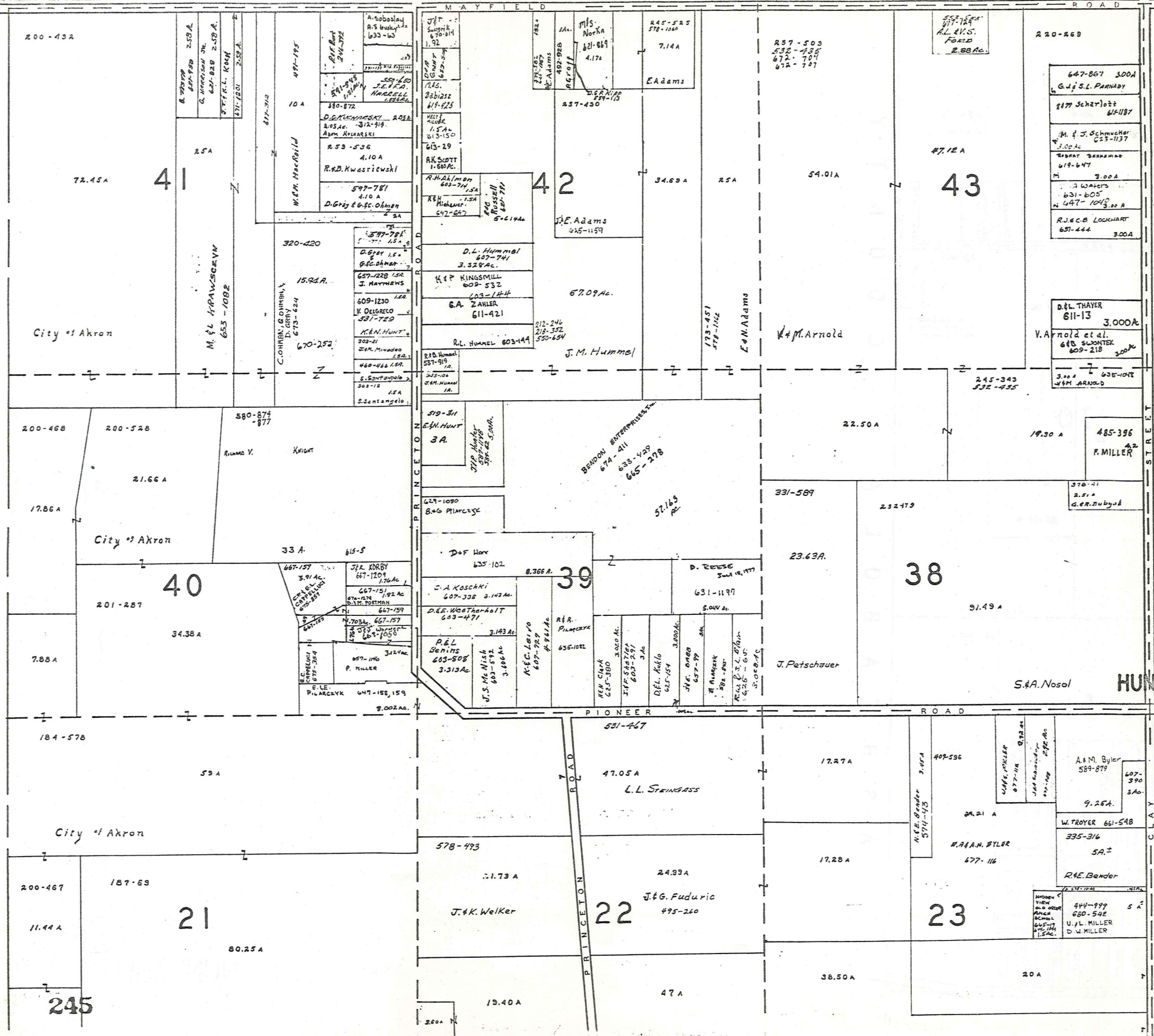
MAYFIELD ROAD



SCALE 1" = 300'
JAN. 1, 1921

A	B	C	D
E	F	G	H
I	J	K	L
M	N	O	P

HUNTSBURG TWP.



37.97 A

2.05 A

50.70 A

13.25 A

14 A

10 A

10 A

200-43A

220-269

200-468

200-528

580-874

184-578

200-467

187-63

531-467

17.27 A

17.28 A

38.50 A

407-536

444-999

607-390

335-316

444-999

680-542

645-111

645-111

645-111

645-111

645-111

645-111

645-111

645-111

645-111

645-111

645-111

645-111

645-111

645-111

645-111

645-111

645-111

645-111

645-111

645-111

645-111

645-111

645-111

645-111

645-111

645-111

645-111

645-111

645-111

645-111

645-111

645-111

645-111

645-111

645-111

645-111

645-111

645-111

645-111

645-111

645-111

645-111

645-111

645-111

645-111

645-111

645-111

645-111

645-111

645-111

645-111

645-111

645-111

645-111

645-111

645-111

645-111

645-111

645-111

645-111

645-111

645-111

645-111

645-111

645-111

645-111

645-111

645-111

645-111

645-111

645-111

645-111

645-111

645-111

645-111

645-111

645-111

645-111

645-111

645-111

645-111

645-111

645-111

645-111

645-111

645-111

645-111

645-111

645-111

645-111

645-111

645-111

645-111

645-111

645-111

645-111

645-111

645-111

645-111

645-111

645-111

645-111

645-111

645-111

645-111

645-111

645-111

645-111

645-111

645-111

645-111

645-111

645-111

645-111

645-111

645-111

645-111

645-111

645-111

645-111

645-111

645-111

645-111

645-111

645-111

645-111

645-111

645-111

645-111

645-111

645-111

645-111

645-111

645-111

645-111

645-111

645-111

645-111

645-111

645-111

645-111

645-111

645-111

645-111

645-111

645-111

645-111

645-111

645-111

645-111

645-111

645-111

645-111

645-111

645-111

645-111

645-111

645-111

645-111

645-111

645-111

645-111

645-111

645-111

645-111

645-111

645-111

645-111

645-111

645-111

645-111

645-111

645-111

645-111

645-111

645-111

645-111

645-111

645-111

645-111

645-111

645-111

645-111

645-111

645-111

645-111

645-111

645-111

645-111

645-111

645-111

645-111

645-111

645-111

645-111

645-111

645-111

645-111

645-111

645-111

645-111

645-111

645-111

645-111

645-111

645-111

645-111

645-111

645-111

645-111

645-111

645-111

645-111

645-111

645-111

645-111

645-111

645-111

645-111

645-111

645-111

645-111

645-111

645-111

645-111

645-111

645-111

645-111

645-111

645-111

645-111

645-111

645-111

645-111

645-111

645-111

645-111

645-111

645-111

645-111

645-111

645-111

645-111

645-111

645-111

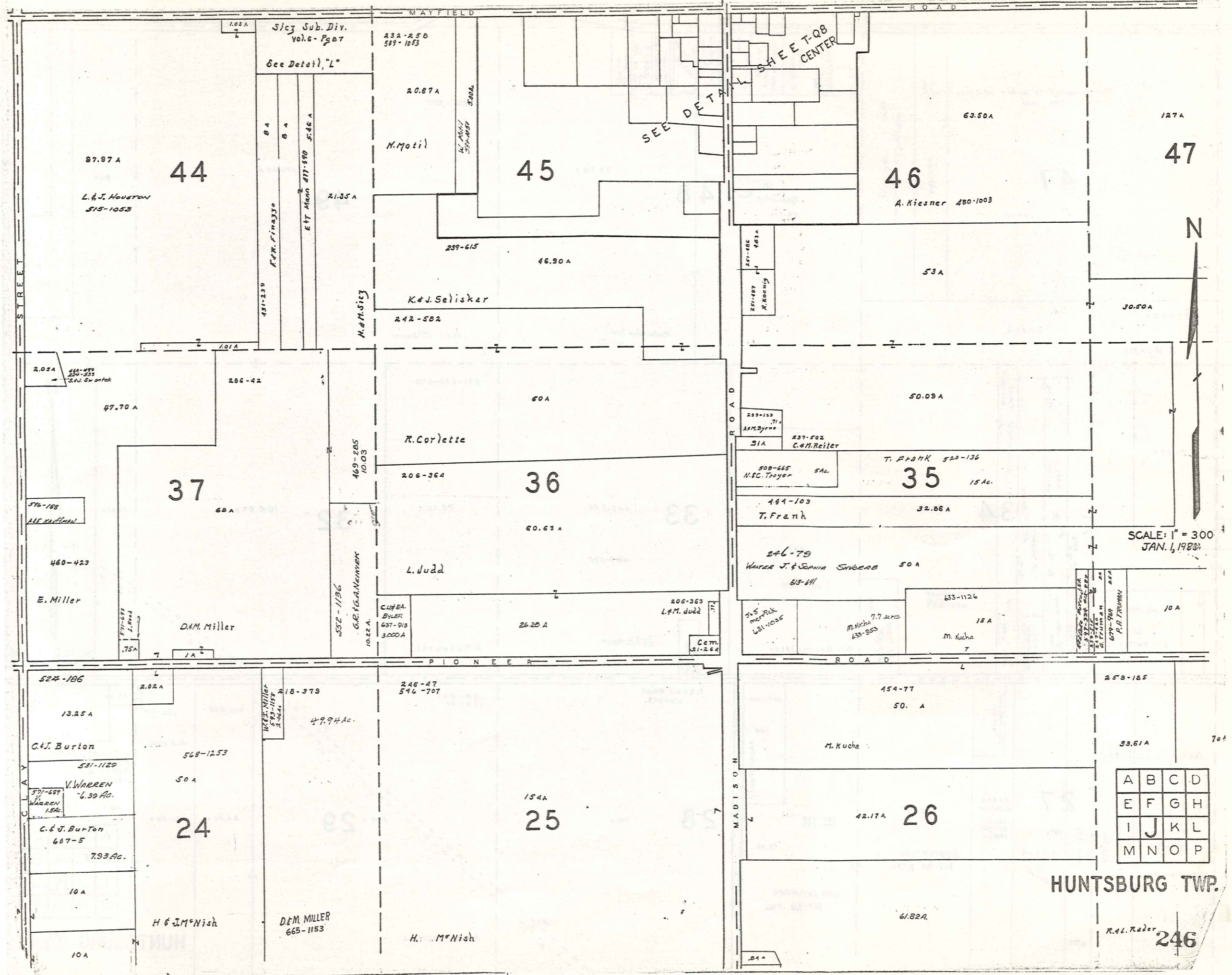
645-111

645-111

645-111

645-111

645-111



Siz Sub. Div.
Vol. 6 - Page 7

See Detail, "L"

232-258
589-1053

20.87 A

M. Motil

45

87.97 A

44

L. & J. Houston
515-1053

46

A. Kiesner 480-1003

47

63.50 A

127 A

237-615

46.90 A

K. & J. Seliskar

242-582

M. & M. Sies

53 A

30.50 A

2.03 A

468-469
250-533
D. W. Swartz

286-42

47.70 A

37

68 A

R. Corlette

60 A

206-364

36

60.63 A

L. Judd

169-285
10.03

332-1136
G. R. F. A. Neuman

C. H. E. A.
BYLER
637-913
3.000 A

26.20 A

206-363
L. M. Judd

Cem.
21-264

508-665
H. C. Troyer

5 A

T. Frank 520-136

35

15 Ac.

444-103
T. Frank

32.86 A

246-79
Walter J. & Sophia Snieber

50 A

613-611

5x5
merRox
L51-1036

M. Kucha
7.7 acres
633-853

633-1126

15 A

M. Kucha

679-969
P. H. Trumbull

10 A

SCALE: 1" = 300'
JAN. 1, 1988

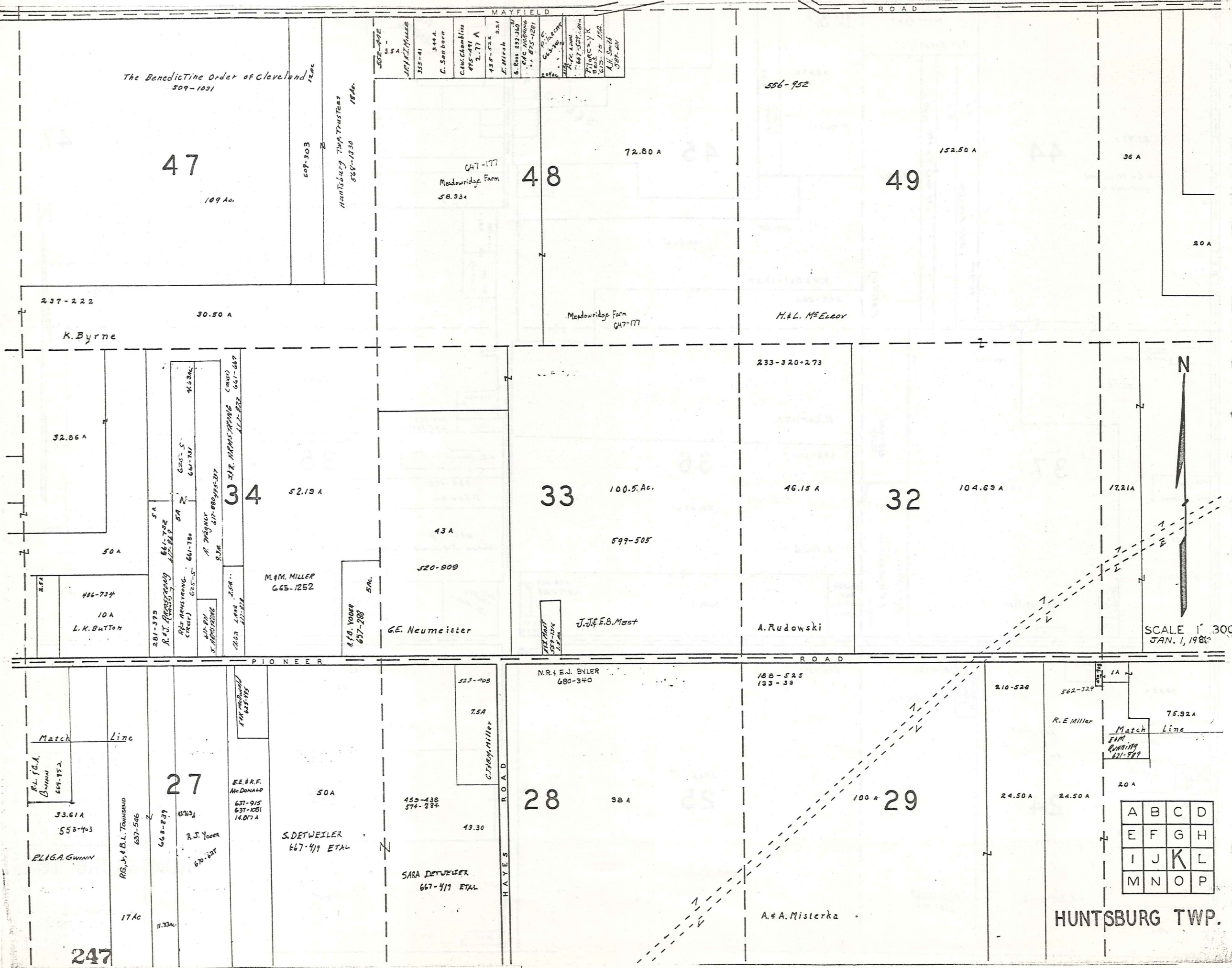


A	B	C	D
E	F	G	H
I	J	K	L
M	N	O	P

HUNTSBURG TWP.

R. L. Rader

246



The Benedictine Order of Cleveland
509-1031

47

109 Ac.

509-403
Huntsburg Twp Trustees
588-1930
18 Ac.

509-412
5.5 A
J.P. Miller
355-41
344 A
C. Sanborn
C.M. Chumbley
495-491
2.77 A
435-528
F. Mirsh
2.21
6. Ross 292-210
C.F. 208-200
1. 875-1281
665-1000
1. 42 A
1. 667-527-81
P.L. 527-81
675-75 122
A.J. Smith
389-24

556-952

48

72.80 A

647-177
Meadowridge Farm
58.934

49

152.50 A

36 A

20 A

237-222

30.50 A

K. Byrne

Meadowridge Farm
647-177

H.A.L. McElroy

233-320-273

32.86 A

34

52.19 A

33

100.5 Ac.

46.15 A

32

104.69 A

17.21 A

50 A

43 A

520-909

J.J. & E.B. Mast

A. Rudowski

M.M. Miller
665-1252

A.F. Yoder
637-288

G.E. Neumeister

SCALE 1" = 300'
JAN. 1, 1981

PIONEER ROAD

ROAD

Match Line

R.L. Tola
Bynum
684-752

27

50 A

E.E. & R.F. McDonald
637-915
637-1081
14.077 A

668-839

R.J. Yoder
670-647

S. DETWEILER
667-411 ETAL

SARA DETWEILER
667-411 ETAL

28

98 A

M.R. & E.J. BYLER
680-340

188-525
193-33

29

100 A

A. & A. Misterka

210-526

24.50 A

R. E. Miller

75.32 A

Match Line
E.M. Running
621-989

A	B	C	D
E	F	G	H
I	J	K	L
M	N	O	P

HUNTSBURG TWP.

247

P
S
H
I
P

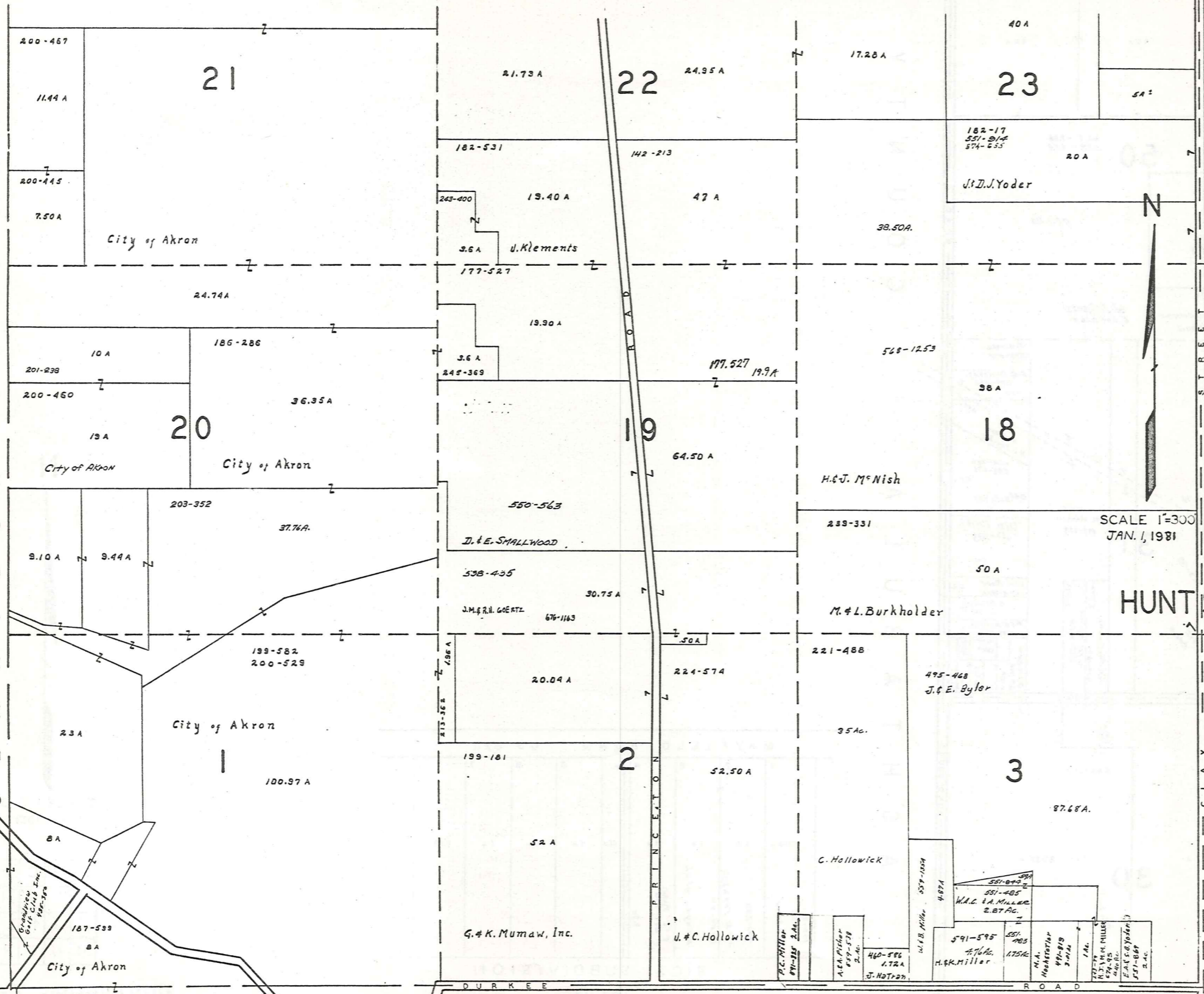
T
O
W
N
S
H
I
P

D
O
N
N

C
L
A
R
I
D
O
N

C
L
A
R
I
D
O
N

M
I
D
D
L
E
F
I
E
L
D
T
O
W
N
S
H
I
P



A	B	C	D
E	F	G	H
I	J	K	L
M	N	O	P

SCALE 1"=300'
JAN. 1, 1981

HUNTSBURG TWP

249 MIDDLEFIELD TOWNSHIP

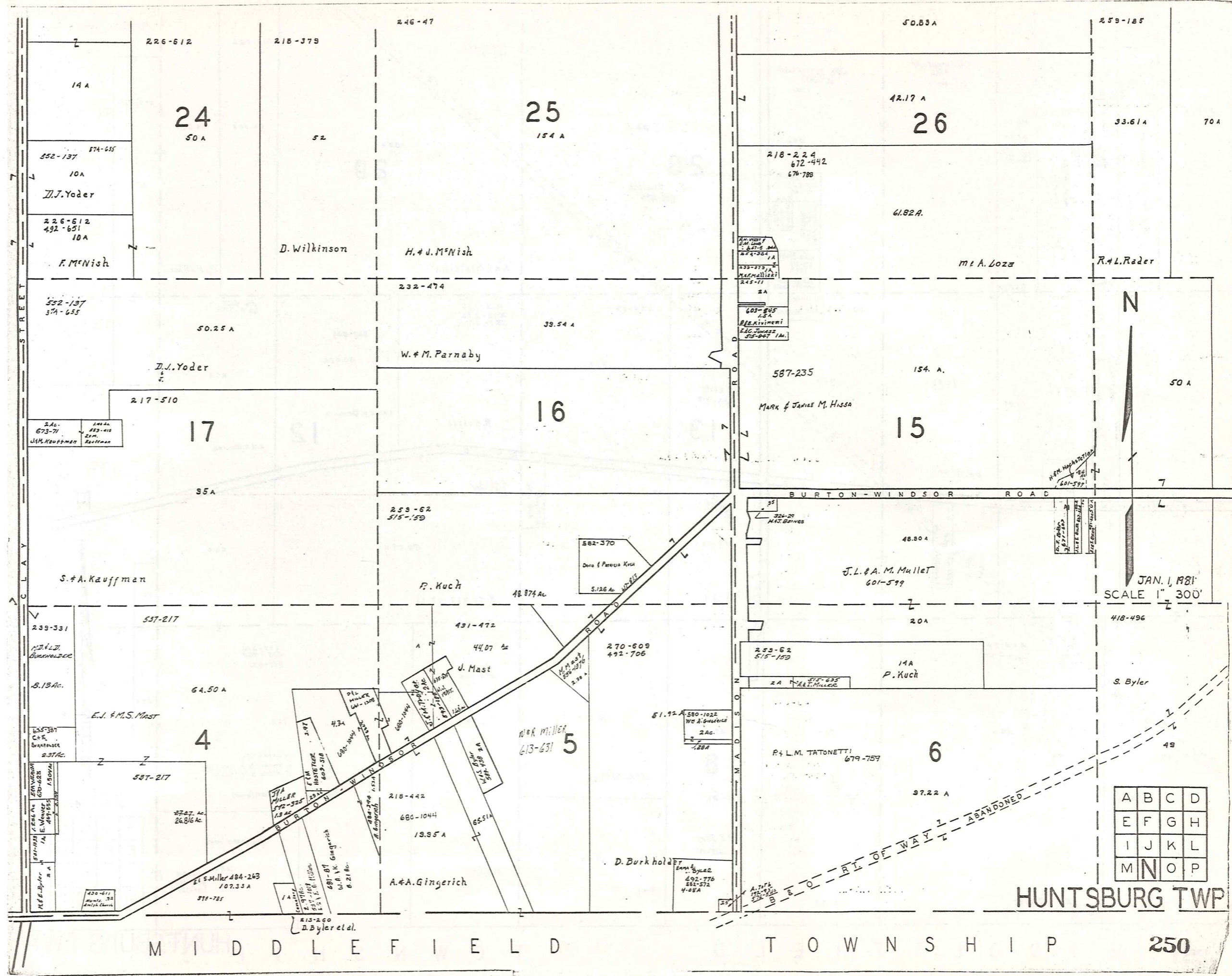
200-467
11.44 A
200-445
7.50 A
City of Akron
24.74 A
10 A
201-238
200-460
19 A
City of Akron
203-352
37.76 A
9.10 A
9.44 A
23 A
City of Akron
8 A
187-533
8 A
City of Akron

21
21.73 A
182-531
243-400
19.40 A
3.6 A
U. Klements
177-527
19.90 A
3.6 A
245-369
36.35 A
City of Akron
550-563
J. & E. SMALLWOOD
538-435
J.M. & R. GOERTZ
676-1163
30.75 A
20.04 A
199-181
52 A
G. & K. Mumaw, Inc.

22
24.95 A
142-213
47 A
177-527
19.9 A
64.50 A
H. & J. Mc Nish
239-331
M. & L. Burkholder
221-488
495-468
J. & E. Byler
35 Ac.
52.50 A
C. Hollowick
U. & C. Hollowick

23
17.28 A
40 A
182-17
551-914
574-535
20 A
J. D. J. Yoder
39.50 A
568-1253
36 A
50 A
87.68 A

14 A
10 A
10 A
50.25 A
97 A
64.21 A
31.75 A

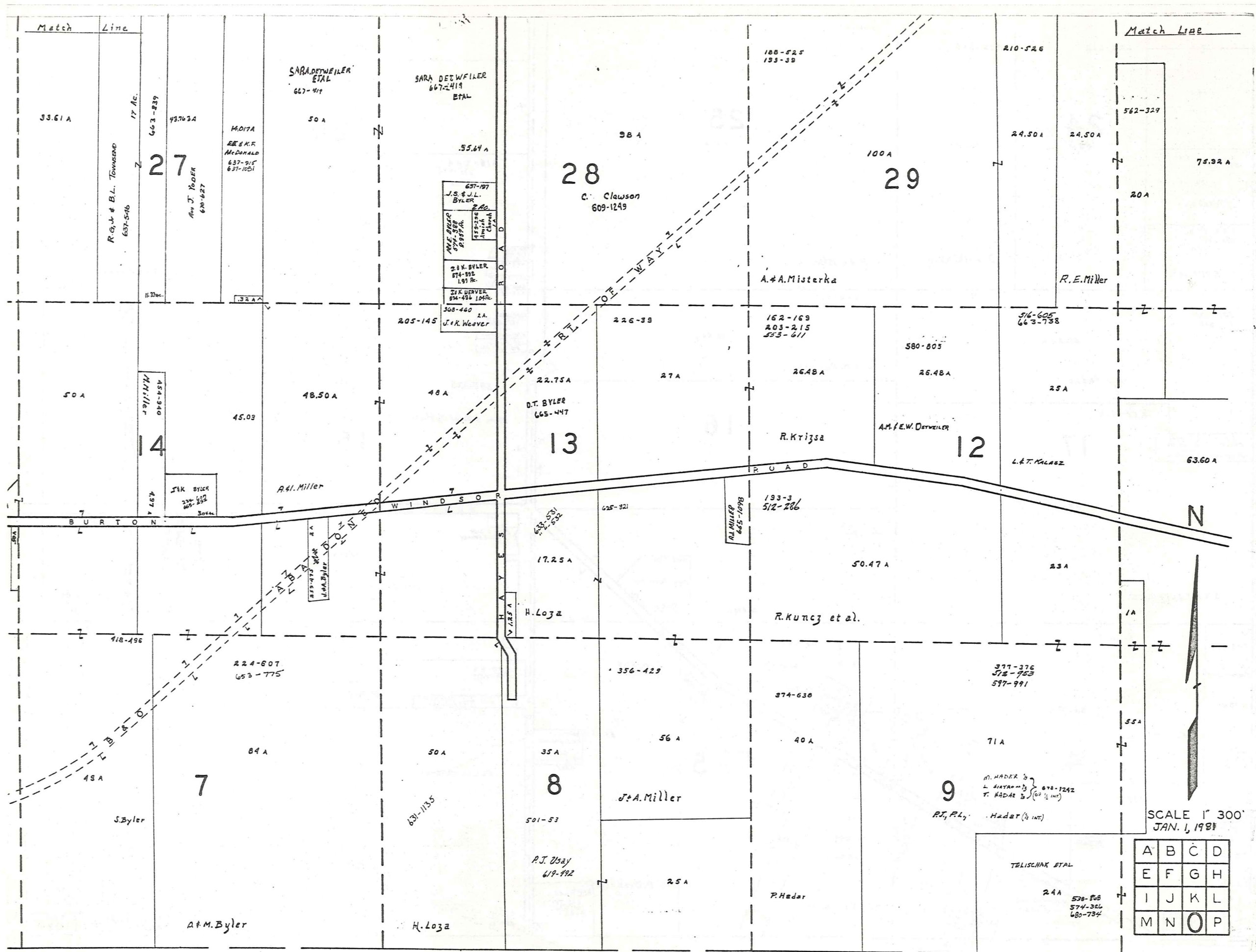


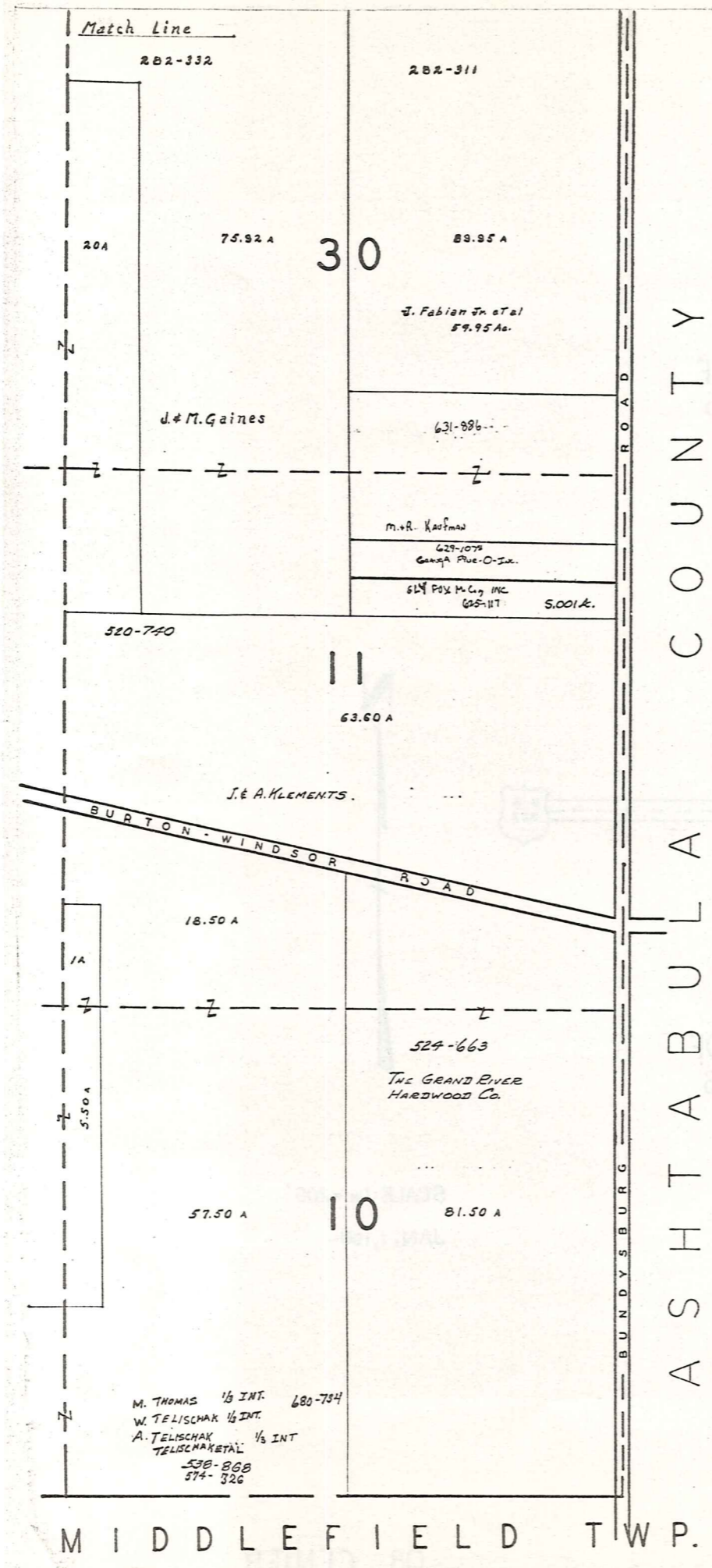
JAN. 1, 1981
SCALE 1" = 300'

A	B	C	D
E	F	G	H
I	J	K	L
M	N	O	P

HUNTSBURG TWP

MIDDLEFIELD TOWNSHIP 250





A S H T A B U L A C O U N T Y



SCALE 1" = 300'
JAN. 1, 1961.

A	B	C	D
E	F	G	H
I	J	K	L
M	N	O	P

HUNTSBURG TWP.
252

HUNTSBURG TP. CENTER

INDEX TO PROPERTIES HAVING #NO.'S

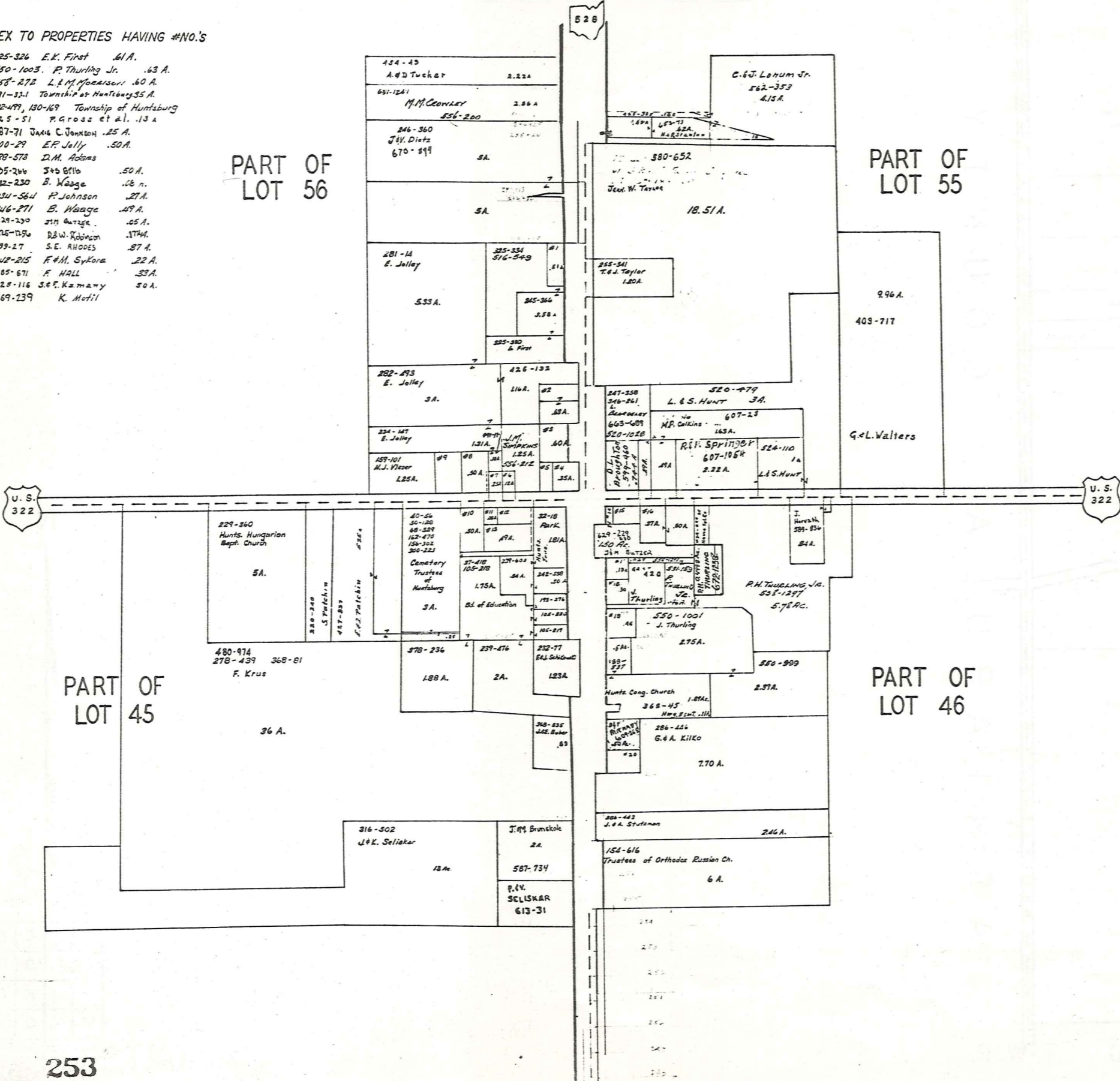
- #1 325-326 E.K. First 61A.
- #2 530-1003 F. Thurling Jr. 63A.
- #3 538-278 L.H. McCarson 60A.
- #4 491-321 Township of Huntsburg 35A.
- #5 122-499, 130-169 Township of Huntsburg
- #6 425-51 P. Gross et al. 13A
- #7 587-71 JAMES C. JOHNSON 25A.
- #8 200-29 E.P. Jolly 50A.
- #9 188-578 D.M. Adams
- #10 675-266 S+B B10 50A.
- #11 542-230 B. Waage 28A.
- #12 234-564 P. Johnson 27A.
- #13 246-271 B. Waage 27A.
- #14 624-230 J.H. Buttz 25A.
- #15 625-139 B.W. Robinson 27A.
- #16 533-27 S.E. RHODES 27A.
- #17 242-215 F.H. Sykora 22A.
- #18 585-671 F. HALL 33A.
- #19 228-116 S.E. Kazmany 50A.
- #20 469-239 K. Motil

PART OF
LOT 56

PART OF
LOT 55

PART OF
LOT 46

PART OF
LOT 45



SCALE: 1 IN. = 200'
JAN. 1, 1981

Explanation and Use Sheet for Geauga County, Ohio

SAMPLE (PARTIAL) COUNTY INDEX MAP



- Township Boundary
- Township Name
- Village Boundary
- Village Name
- Tract Lot Number
- Street Name
- Acreage
- Deed Book & Page
- Owners Name
- Denotes Continous Ownership

SAMPLE (PARTIAL) MAP PAGE



- Map Page Number
- Village Name
- Village Boundary
- Township Name

SAMPLE (PARTIAL) MUNICIPALITY INDEX MAP



- Street Name
- Village Name
- Township Name

USE OF THE MAP VOLUME

1. LOCATE THE GENERAL AREA OF INTEREST ON THE COUNTY INDEX MAP, ATLAS PAGE 'B', AND NOTE THE MUNICIPALITY NAME (TOWNSHIP OR VILLAGE).
2. REFER TO THE TABLE OF CONTENTS, ATLAS PAGE 'C', AND NOTE THE BEGINNING ATLAS PAGE NUMBER FOR THE MUNICIPALITY OF INTEREST.
3. TURN TO THE PAGE INDICATED. ON THIS PAGE WILL APPEAR AN INDEX MAP FOR THAT MUNICIPALITY.
4. LOCATE THE GENERAL AREA OF INTEREST AND NOTE THE MAP PAGE NUMBER. THIS MAY BE EITHER A LETTER OR A NUMBER.
5. MAP PAGES ARE IN ALPHABETICAL (OR NUMERICAL) SEQUENCE FOLLOWING THE MUNICIPALITY INDEX MAP. FOLLOW SEQUENCE TO THE MAP PAGE INDICATED.
6. LOCATE SPECIFIC PARCEL OF INTEREST AND NOTE THE DESIRED INFORMATION.

NOTE: ON SOME MAPS YOU MAY BE REFERRED TO A DETAIL SHEET SHOWING AN ENLARGEMENT OF THE AREA. THESE MAPS ARE FOUND AT THE END OF THE REGULAR MAP PAGES IN EACH MUNICIPALITY IN EITHER ALPHABETICAL OR NUMERICAL SEQUENCE.

NOTE: CHARDON VILLAGE HAS TITLE SHEETS. TO LOCATE OWNERS NAME, NOTE THE PARCEL NUMBER, REFER TO THE TITLE PAGE FOLLOWING THE MAP OF INTEREST, FOLLOW NUMERICAL SEQUENCE TO THE PARCEL NUMBER OF INTEREST AND NOTE THE DESIRED INFORMATION. IN ALL OTHER MUNICIPALITIES THE OWNERS NAME APPEARS ON THE MAP PAGE.

This book is the property of REAL ESTATE DATA, INC. and is distributed by REDI under a leasing arrangement requiring return to REDI upon termination of the lease. REDI reserves the right to reclaim this book if found in the possession of any firm or person where possession was obtained through any unauthorized source.